

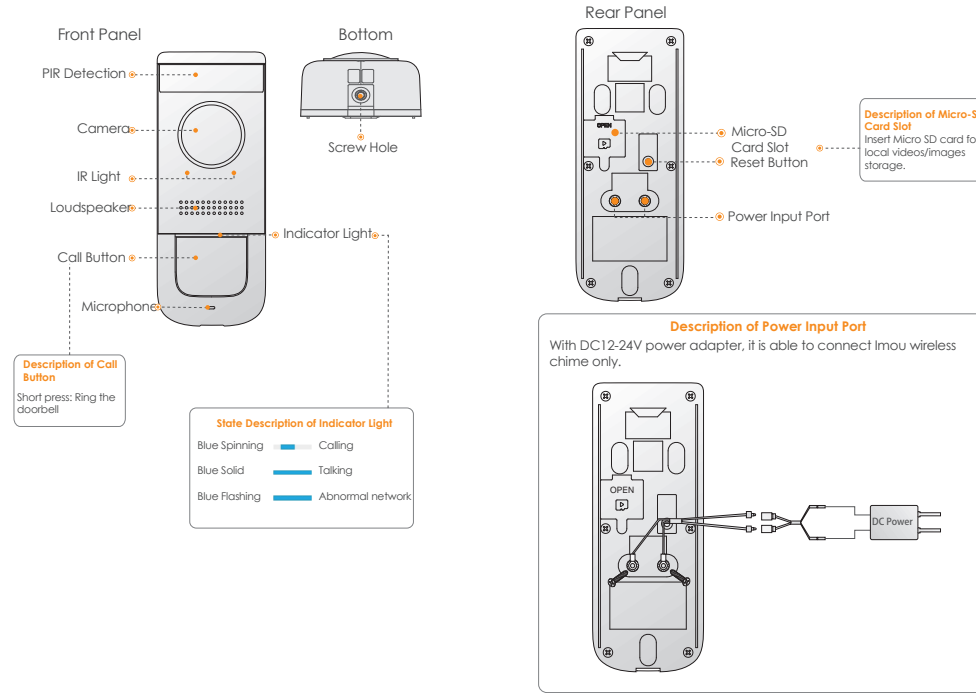


Quick Start Guide

Version 1.0.0



Product Appearance



Add Device

Please ensure that your mobile phone has connected with Wi-Fi.

Step 1: Download and log onto App

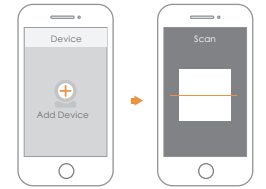
- 1 Connect your smartphone to your Wi-Fi network, scan the following QR code to download and install Imou App.



- 2 Run Imou App, and register an account for the first use.

Step 2 Add Device

- 1 At device list interface, press "+" to enter "QR Code Scanning" interface.
- 2 Scan QR code on the back of the doorbell to get the SN; you can also manually enter the SN on the next page.
- 3 Press Reset Key on the rear panel of the device. If indicator is blue spinning light, it means that device hotspot is on.



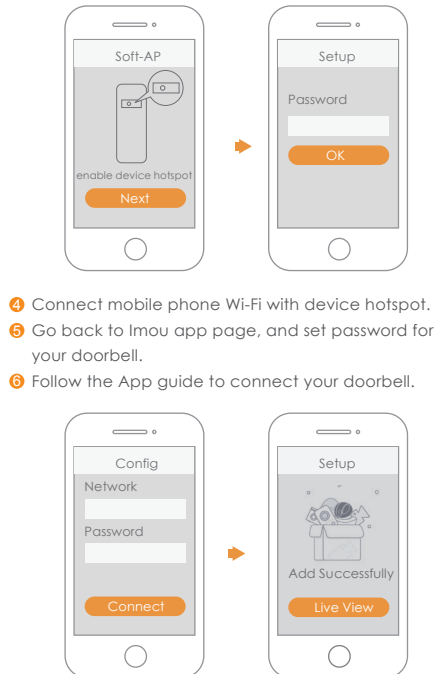
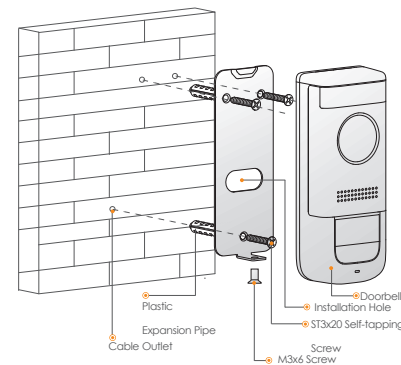
Disclaimer

- This quick start guide is for reference only. Minor difference might be found in user interface.
- All the design and software here are subject to change without prior written notice.
- All trademarks and registered trademarks mentioned are the properties of their respective owners.
- Please visit our website or contact your local service engineer for more information.
- If there is any uncertainty or controversy, please refer to our final explanation.

Product Installation

Please ensure that the device has been added successfully.

- 1 Loosen M3x6 screws at the bottom of the device, and dismantle the installation bracket from the device.
- 2 Drill holes in the wall according to screw hole and cable outlet positions of installation bracket, and install plastic expansion pipes.
- 3 Fix the bracket onto the wall with three ST3x20 self-tapping screws.
- 4 Connect cables.
- 5 Put the device into the slot at the top of the bracket from top to bottom.
- 6 Fix the device onto the bracket with M3x6 screws.



FAQ

- Q: The device cannot boot up?**
Please confirm whether power voltage of the device is normal, and whether power cable is well connected.
- Q: Connection is overtime?**
- a. The device, mobile phone and router are too far away. Please put them within 30cm (12 inches) when configuring.
 - b. Please reset the device to factory defaults and follow the guide on App page to try again.
- Q: The device is not online?**
Please check the state of device indicator light. If blue light flickers all the time, it means that the device fails to connect the network. Please check whether wireless router can connect the network; connect your mobile phone with this wireless network to test it. If it can connect the network, please reset the device and configure again.
- Q: How to upgrade the firmware?**
Enter "Me > My Device" to find the device, and view cloud upgrade menu. If there is new program prompt (a red dot), click to enter upgrade interface. The device will be rebooted automatically after upgrade.
- Q: There is no message when PIR motion detection is triggered?**
- a. Please check whether alarm subscription is enabled.
 - b. If it is enabled, please check whether corresponding PIR zone is enabled.
 - c. Please check whether zone detection distance is set to be a relatively small range.
- Q: How to restore factory settings?**
Please press Reset Button on the rear panel of the device for 5s. Blue light will be on for 3s and then turn off; the device will reboot automatically and restore factory default settings.

Safety Tips and Warnings

The following description is the correct application method of the device. Please read the manual carefully before use, in order to prevent danger and property loss. Strictly follow the manual during application and keep it properly after reading.



- Please don't place and install the device in an area exposed to direct sunlight or near heat generating device.
- Please don't install the device in a humid, dusty or fuliginous area.
- Please keep its horizontal installation, or install it at stable places, and prevent it from falling.
- Please don't drip or splash liquids onto the device; don't put on the device anything filled with liquids, in order to prevent liquids from flowing into the device.
- Please install the device at well-ventilated places; don't block its ventilation opening.
- Use the device only within rated input and output range.
- Please don't dismantle the device arbitrarily.
- Please transport, use and store the device within allowed humidity and temperature range.
- Products with category I structure shall be connected to grid power output socket, which is equipped with protective grounding.